



## *Introducing The Brookwood, a Meritus Signature.*

Step inside this dramatic two story foyer. This home comes complete with a formal living / study and dining room. The Brookwood features 3 bedrooms including a main level master and each bedroom has it's own bath as well as a powder room on the main floor. Tray ceilings cap off the master bedroom and dining room and a vaulted ceiling is in the living / study. You may choose to have the optional sunroom and/or the bonus room over the garage.

### BROOKWOOD SPECIFICATIONS

3 Bedrooms – 3 1/2 Baths	
1st Floor	1,648
2nd Floor	700
Optional Sunroom	228
Optional Bonus Room	198
Total Heated Sq Ft	2,774
Garage	435
Porch	43
Total Under Roof Sq Ft	3,252

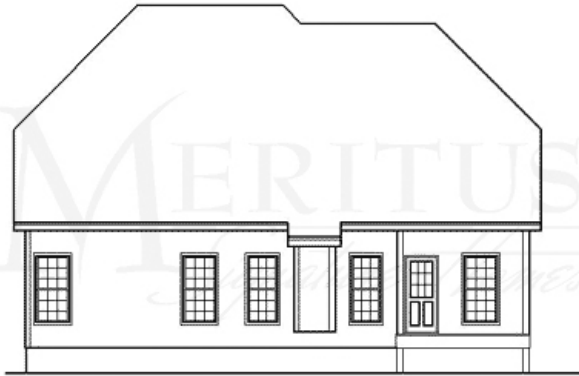
*Designed For Living. Built To Last.*

More Information~  
Call 1.888.701.1717

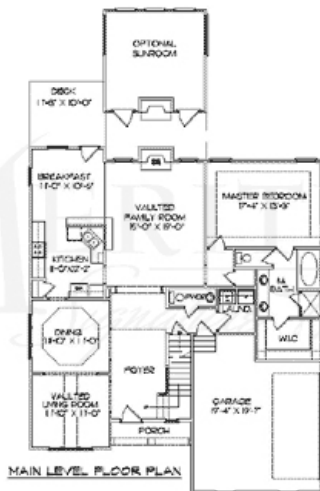
2508-A North Main Street  
Anderson, South Carolina 29621

[www.meritushomes.com](http://www.meritushomes.com)

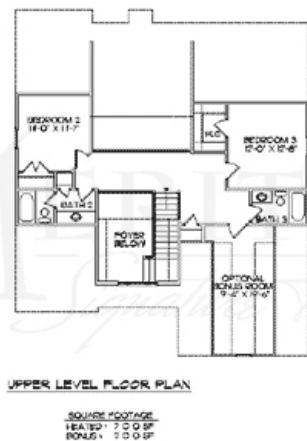
# The Brookwood



REAR ELEVATION



FIRST FLOOR



SECOND FLOOR

## GENERAL FEATURES

- Elegant Wainscoting, Chair Rail, & Crown Molding in Dining Room
- Traditional Casing around Windows & Doors
- Hardwood Floors in Foyer
- Quality Carpeting by Shaw in a wide choice of Colors with 8 lb. Pad
- Vinyl Flooring in all Baths, Kitchen, & Laundry
- Cabinets with Lifetime Warranty
- Volume Ceilings throughout with Tray and Vaulted Ceilings per plan
- Low Maintenance Vinyl Windows with Grilles between the Low - E glass
- Plumbing Fixtures by Moen
- 30 Year Architectural Shingles
- Vinyl Siding
- Garage Doors with 2 Remotes
- 2 Exterior Hose Bibs & Front and Rear Flood Lights

## KITCHEN

- Laminate Counter Tops
- Energy Efficient Appliances including a Smooth Top Range, Microwave / Hood Combo, Dishwasher, and Disposal
- Stainless Steel Sink with Moen Faucet and Vegetable Sprayer

## BATHS

- Cultured Marble Bath Vanity Tops with Integrated Bowls
- Moen Faucets
- Matching Bath Accessories

## CONVENIENCES

- 50 Gallon Electric Water Heater
- Electric Door Chime & Smoke Detectors
- Each Home is Professionally Cleaned prior to Move-in
- Individual Electric Heat Pump for Each Level of Home
- Pressure Treated Wood Decks Per Plan
- Concrete Floors Porches with Vinyl or Wrought Iron Hand Rails

## OPTIONS & UPGRADES AVAILABLE

- Poured Wall Basements
- Brick, Cultured Stone, or Fiber-Cement Siding on Exterior
- Screen Porches, Sunrooms, & Bonus Rooms
- Gas Log Fireplaces
- Solid Surface Counter Tops
- Central Vacuum
- Tile Flooring
- Whirlpool Tubs and Tile Showers with Frameless Shower Doors
- Full Landscaping